



In 2023 PFF was the beginning of a time of change. For over thirty years Cathy Johnson was the leadership of PFF. Cathy Johnson handed off her leadership role to Brooke Rustad. As we embrace this new chapter together, I am confident that we will achieve great things and continue to make a meaningful difference in the lives of those we serve.

One of the most inspiring aspects of the past year has been witnessing the incredible dedication and commitment of our staff members at PFF. They continue to step up and work hard even through the changes within PFF.

PFF's Community Residential Program (Formally SLS) had faced hardships in the last year with needing to close a home down, but we persevered by working together to ensure everyone's needs were met.

PFF's guardianship/conservatorship program continued to grow in 2023. We have received multiple positive feedback from people regarding the remarkable work we have accomplished in this program. This shows that our efforts are being recognized and appreciated by others.

As we reflect on the past year's achievements and challenges, we will remain focused on our mission and vision for the future. Together, we can continue to make a meaningful impact in our community and though out the state of Minnesota.

Tom Odens

A handwritten signature in black ink that reads 'Tom Odens'.



MISSION

**Protecting,
supporting and
empowering people
to pursue an
authentic life of
purpose and
fulfillment.**

VISION

**We envision an
inclusive
community where
people of all
abilities
contributes, thrive
and purse their
dreams**



PFF Board Members

Tom Odens, President
Heather Smith, Vice President
Sharyl Helgeson, Treasurer
Nancy Birkeland, Secretary
Jen Hovland, Director

A STORY OF IMPACT



During the summertime in Minnesota, people love to explore the great outdoors. Our team has been getting creative in finding ways to help the individuals in our programs enjoy the scenic beauty of the lake. In 2023, staff organized a cabin trip where the participants were able to enjoy boat rides, engage in crafting activities and immerse themselves in nature. The trip was a success and we are already planning a similar excursion in 2024!

A letter from the Administrator

As the newly appointed administrator of PFF, I am excited to join an organization that has made such a positive impact on people's lives in our community. As I step into the role of administrator here at PFF, it is truly an honor to join this esteemed organization, which has a rich history of making a positive impact in our community.

I understand that I am following in the footsteps of someone who has been with the company for many years. While I recognize the magnitude of this transition, I am also eager to bring fresh perspectives and ideas to the table. I am committed to building upon the strong foundation laid by my predecessor and working collaboratively with each of you to continue our mission of Protecting, supporting and empowering people to pursue an authentic life of purpose and fulfillment.

Change can be both exhilarating and challenging, but I firmly believe that it also presents us with opportunities for growth and innovation. I am excited to embark on this journey to propel PFF forward.

Thank you for your support and warm welcome as I embark on this journey with you. I am honored to serve as your new administrator and look forward to working alongside the amazing staff that work at PFF.

-Brooke Rustad



December 31, 2023

BALANCE SHEET

Current Assets	\$2518,270
Net Long-Term Assets	\$740,052
Other Assets	\$0
Total Assets	\$3,183,035
Liabilities	\$335,745
Net Assets	\$2,922,577
Total Liabilities And Net Assets	\$3,258,322

PFF serves 43 Minnesota counties with Guardianship and Conservatorship services. The Administration offices are in Willmar and St. Cloud.



PFF PROGRAM IMPACT & HIGHLIGHTS

GUARDIANSHIP/CONSERVATORSHIP

\$9M Under conservatorship, including land and properties
\$2M+ Under Trusteeship
309 People Served

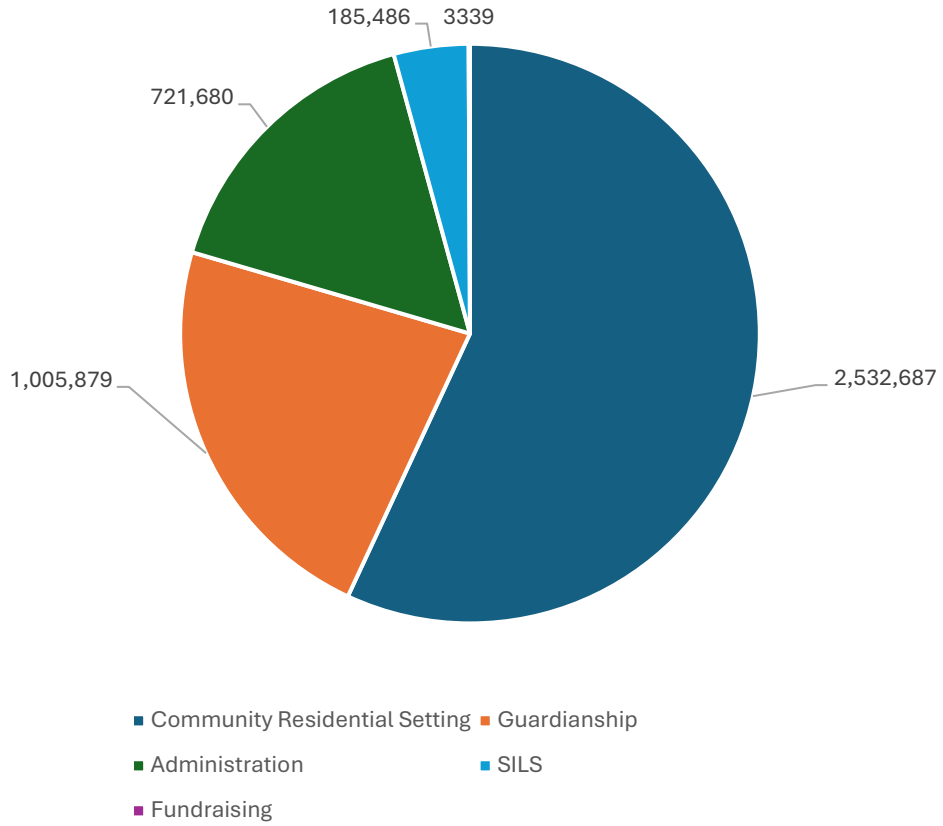
Community Residential Services (CRS)

10 CRS Licensed Homes
30 People Served
1 Emergency Closer

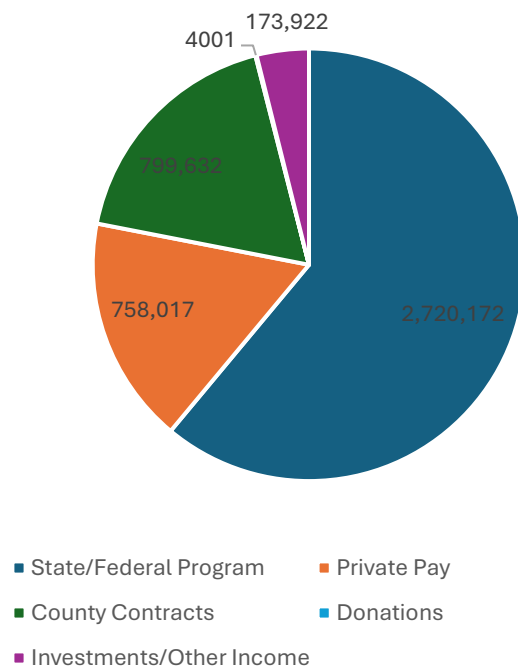
SEMI-INDEPENDENT LIVING SERVICES (SILS)

15 People Served

Expenses



INCOME





901 Hwy 71 NE
Willmar, MN 56201

